

1. Penny ate 6 more grapes than Jeff. If Jeff ate 15 grapes, how many did they eat altogether?

Jordan

✓ Jeff and Penny ate — grapes

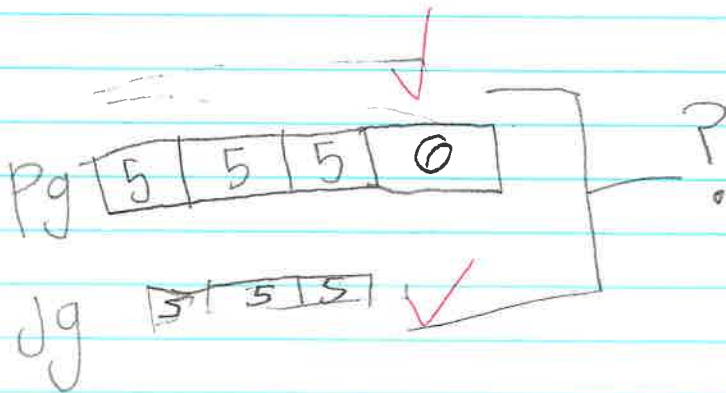
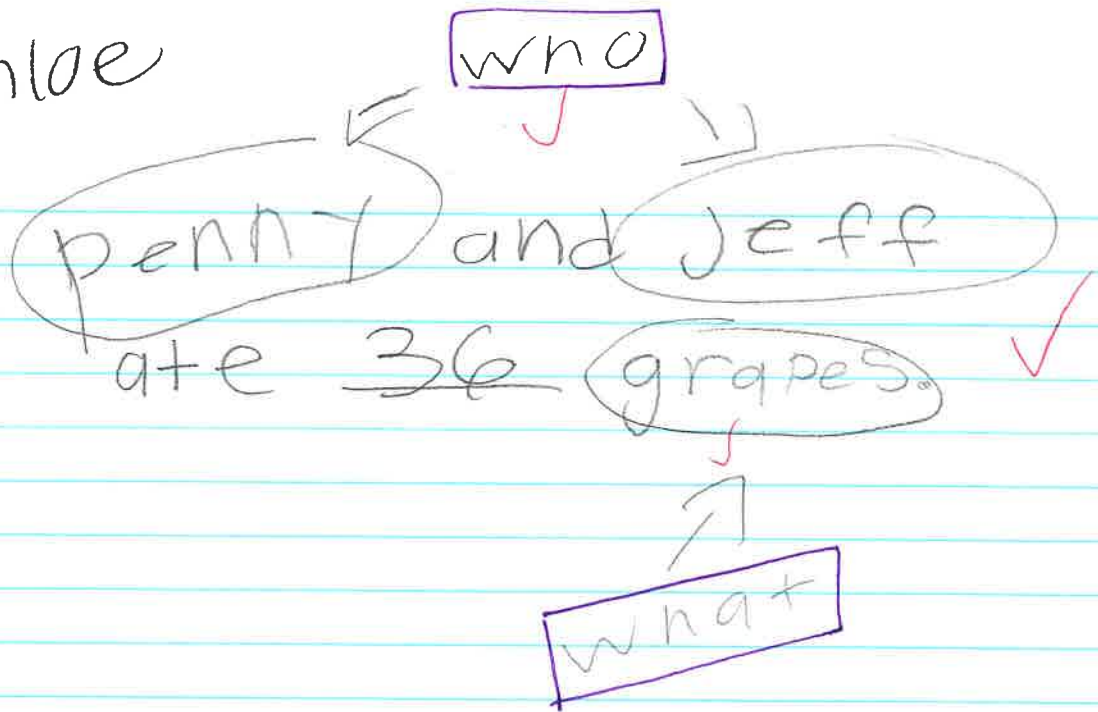
✓

JG	15	6	-?
PG	15		

✓ $15 + 15 = 30 + 6 = 36$ Grapes
 $15 + 6 = 21 + 15 = 36$ Grapes
 $15 \times 2 = 30 + 6 = 36$ Grapes } — great!

Jeff and Penny ate 36 Grapes
altogether

1# chloe



~~30~~

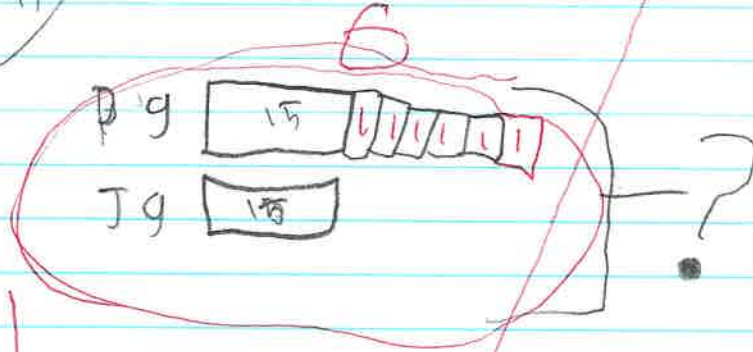
$$\begin{array}{r} 30 \\ + 6 \\ \hline 36 \end{array}$$

36 ✓

Thomas

Penny and Jeff
graph

ate 36



$$\begin{array}{r} 15 \\ + 15 \\ \hline 30 \end{array}$$